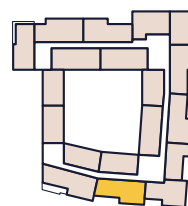




Golding Homes at
Wrens Cross

TWO BEDROOM APARTMENT

38 Wrens Cross, Upper Stone Street,
Maidstone, ME15 6YU



SECOND FLOOR



Plot 37

Internal area: 73.37m² ~ 789ft²

| | | | | | | |
|---------------|-------|---|-------|-------|---|--------|
| Kitchen | 3.16m | x | 2.06m | 10'4" | x | 6'9" |
| Living/Dining | 6.82m | x | 4.65m | 22'4" | x | 15'3" |
| Bedroom 1 | 3.89m | x | 3.31m | 11'1" | x | 10'10" |
| Bedroom 2 | 3.91m | x | 3.02m | 12'9" | x | 9'10" |

Floorplans shown are indicative only. All dimensions indicated are approximate with maximum dimensions of finished measurements and should not be relied upon for carpet sizes or items of furniture. Golding Places reserves the right to make changes to these plans prior to exchange of contracts.

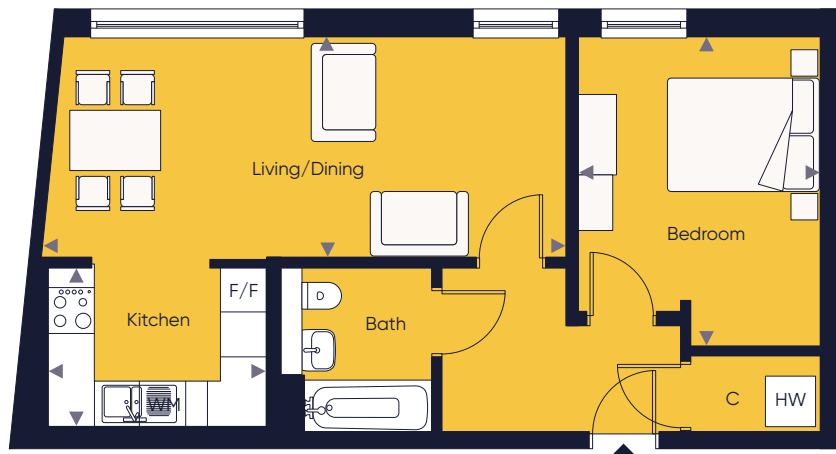
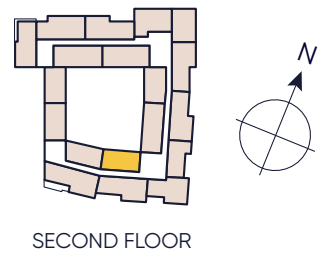


COMPLETE MOVES

— GOLDING —
PLACES

ONE BEDROOM APARTMENT

42 Wrens Cross, Upper Stone Street,
Maidstone, ME15 6YU



Plot 38

Internal area: 55.32m² ~ 595ft²

| | | | | | | |
|---------------|-------|---|-------|-------|---|-------|
| Kitchen | 2.89m | x | 2.09m | 9'5" | x | 6'10" |
| Living/Dining | 6.94m | x | 2.98m | 22'9" | x | 9'9" |
| Bedroom | 4.13m | x | 3.19m | 13'6" | x | 10'5" |

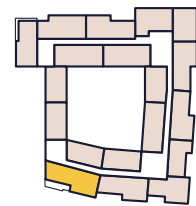
Floorplans shown are indicative only. All dimensions indicated are approximate with maximum dimensions of finished measurements and should not be relied upon for carpet sizes or items of furniture. Golding Places reserves the right to make changes to these plans prior to exchange of contracts.



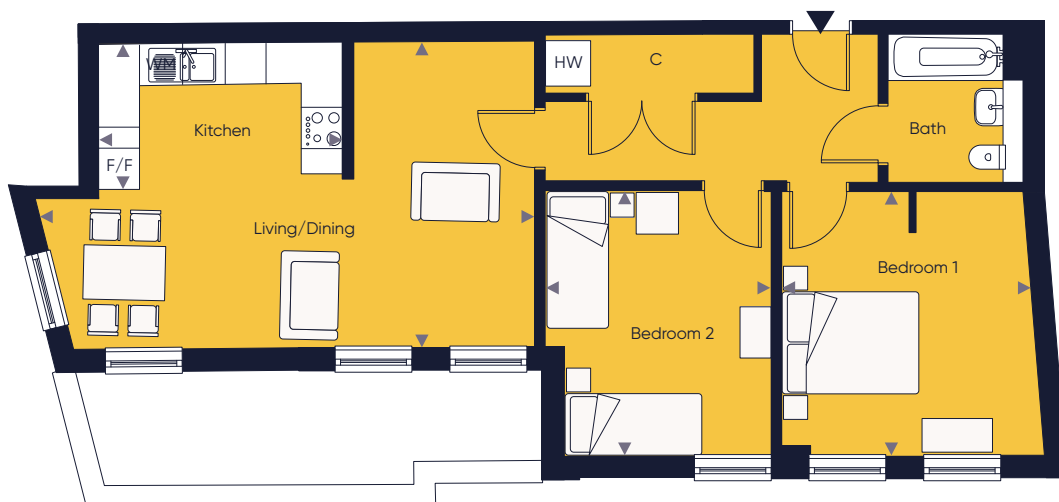
Golding Homes at
Wrens Cross

TWO BEDROOM APARTMENT

39 Wrens Cross, Upper Stone Street,
Maidstone, ME15 6YU



SECOND FLOOR



Plot 39

Internal area: 78.14m² ~ 841ft²

| | | | | | | |
|---------------|-------|---|-------|--------|---|-------|
| Kitchen | 3.57m | x | 2.13m | 11'8" | x | 6'11" |
| Living/Dining | 7.27m | x | 4.50m | 23'10" | x | 14'9" |
| Bedroom 1 | 3.87m | x | 3.67m | 12'8" | x | 12'0" |
| Bedroom 2 | 3.94m | x | 3.29m | 12'11" | x | 10'9" |

Floorplans shown are indicative only. All dimensions indicated are approximate with maximum dimensions of finished measurements and should not be relied upon for carpet sizes or items of furniture. Golding Places reserves the right to make changes to these plans prior to exchange of contracts.



COMPLETE MOVES

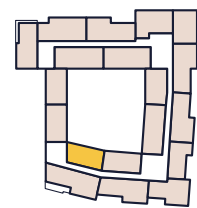
— GOLDING —
PLACES



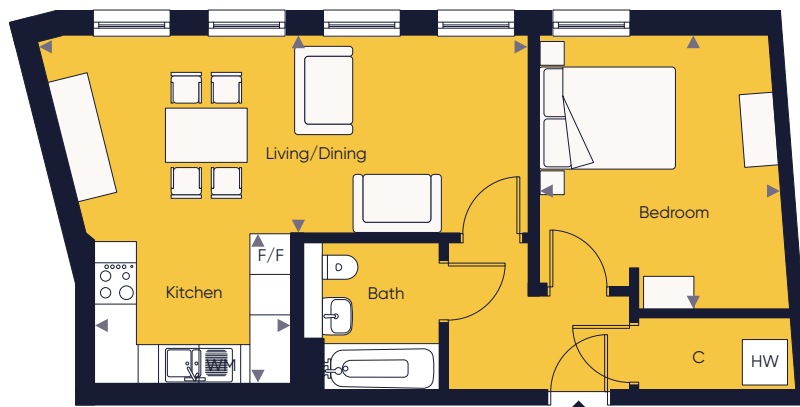
Golding Homes at
Wrens Cross

ONE BEDROOM APARTMENT

41 Wrens Cross, Upper Stone Street,
Maidstone, ME15 6YU



SECOND FLOOR



Plot 40

Internal area: 55.65m² ~ 599ft²

| | | | | | | |
|---------------|-------|---|-------|-------|---|-------|
| Kitchen | 2.88m | x | 2.20m | 9'4" | x | 7'2" |
| Living/Dining | 7.19m | x | 2.92m | 23'7" | x | 9'6" |
| Bedroom | 4.05m | x | 3.55m | 13'3" | x | 11'7" |

Floorplans shown are indicative only. All dimensions indicated are approximate with maximum dimensions of finished measurements and should not be relied upon for carpet sizes or items of furniture. Golding Places reserves the right to make changes to these plans prior to exchange of contracts.



COMPLETE MOVES

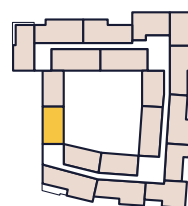
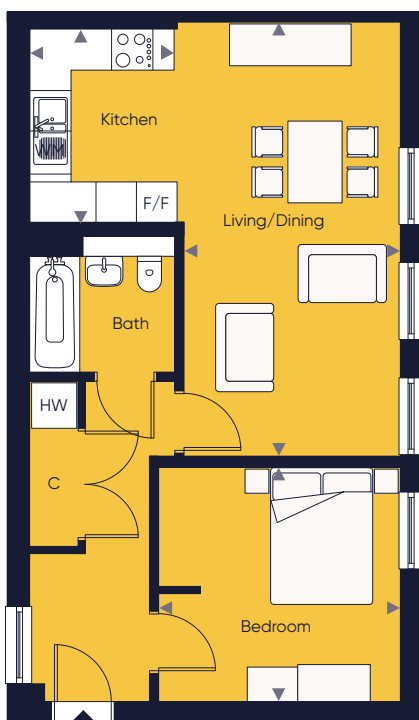
— GOLDING —
PLACES



Golding Homes at
Wrens Cross

ONE BEDROOM APARTMENT

40 Wrens Cross, Upper Stone Street,
Maidstone, ME15 6YU



SECOND FLOOR



Plot 41

Internal area: 55.21m² ~ 594ft²

| | | | | | | |
|---------------|-------|---|-------|--------|---|-------|
| Kitchen | 2.84m | x | 2.10m | 9'3" | x | 6'10" |
| Living/Dining | 6.38m | x | 3.18m | 20'11" | x | 10'5" |
| Bedroom | 3.55m | x | 3.44m | 11'7" | x | 11'3" |

Floorplans shown are indicative only. All dimensions indicated are approximate with maximum dimensions of finished measurements and should not be relied upon for carpet sizes or items of furniture. Golding Places reserves the right to make changes to these plans prior to exchange of contracts.

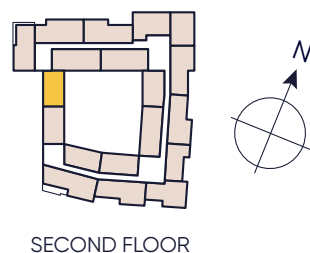
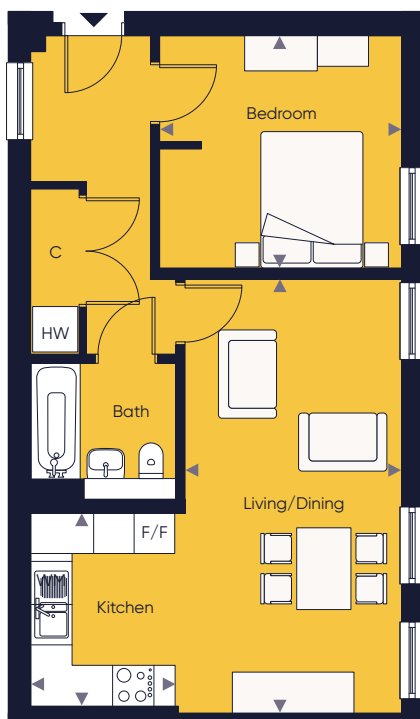


COMPLETE MOVES

— GOLDING —
PLACES

ONE BEDROOM APARTMENT

51 Wrens Cross, Upper Stone Street,
Maidstone, ME15 6YU



Plot 42

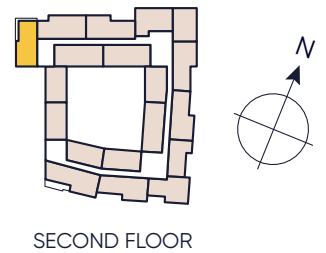
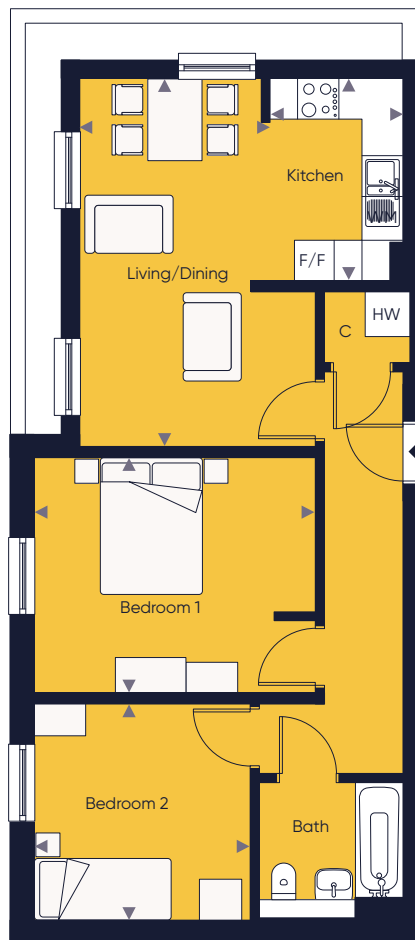
Internal area: 55.21m² ~ 594ft²

| | | | | | | |
|---------------|-------|---|-------|--------|---|-------|
| Kitchen | 2.84m | x | 2.10m | 9'3" | x | 6'10" |
| Living/Dining | 6.38m | x | 3.18m | 20'11" | x | 10'5" |
| Bedroom | 3.55m | x | 3.44m | 11'7" | x | 11'3" |

Floorplans shown are indicative only. All dimensions indicated are approximate with maximum dimensions of finished measurements and should not be relied upon for carpet sizes or items of furniture. Golding Places reserves the right to make changes to these plans prior to exchange of contracts.

TWO BEDROOM APARTMENT

53 Wrens Cross, Upper Stone Street,
Maidstone, ME15 6YU



Plot 43

Internal area: 64.75m² ~ 696ft²

| | | | | | | |
|---------------|-------|---|-------|-------|---|-------|
| Kitchen | 2.97m | x | 1.95m | 9'8" | x | 6'4" |
| Living/Dining | 5.41m | x | 2.80m | 17'8" | x | 9'2" |
| Bedroom 1 | 4.14m | x | 3.46m | 13'6" | x | 11'4" |
| Bedroom 2 | 3.18m | x | 3.17m | 10'5" | x | 10'4" |

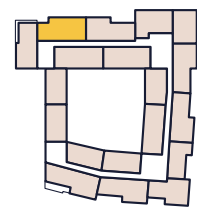
Floorplans shown are indicative only. All dimensions indicated are approximate with maximum dimensions of finished measurements and should not be relied upon for carpet sizes or items of furniture. Golding Places reserves the right to make changes to these plans prior to exchange of contracts.



Golding Homes at
Wrens Cross

TWO BEDROOM APARTMENT

55 Wrens Cross, Upper Stone Street,
Maidstone, ME15 6YU



SECOND FLOOR



Plot 44

Internal area: 78.56m² ~ 845ft²

| | | | | | | |
|---------------|-------|---|-------|--------|---|--------|
| Kitchen | 3.63m | x | 1.89m | 11'10" | x | 6'2" |
| Living/Dining | 6.36m | x | 6.12m | 20'11" | x | 20'0" |
| Bedroom 1 | 3.89m | x | 3.34m | 12'9" | x | 10'11" |
| Bedroom 2 | 3.93m | x | 3.10m | 12'10" | x | 10'2" |

Floorplans shown are indicative only. All dimensions indicated are approximate with maximum dimensions of finished measurements and should not be relied upon for carpet sizes or items of furniture. Golding Places reserves the right to make changes to these plans prior to exchange of contracts.



COMPLETE MOVES

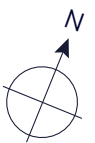
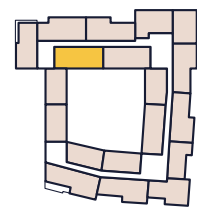
— GOLDING —
PLACES



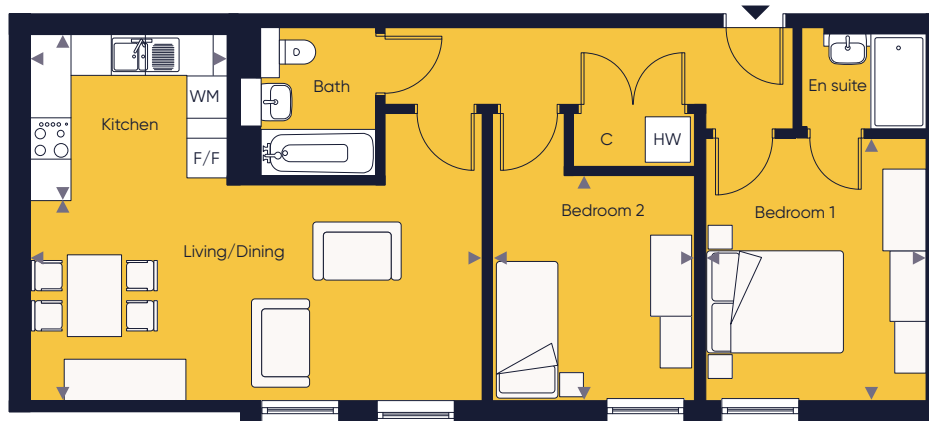
Golding Homes at
Wrens Cross

TWO BEDROOM APARTMENT

49 Wrens Cross, Upper Stone Street,
Maidstone, ME15 6YU



SECOND FLOOR



Plot 45

Internal area: 74.38m² ~ 800ft²

| | | | | | | |
|---------------|-------|---|-------|-------|---|-------|
| Kitchen | 2.91m | x | 2.44m | 9'6" | x | 8'0" |
| Living/Dining | 6.74m | x | 2.77m | 22'1" | x | 9'1" |
| Bedroom 1 | 3.86m | x | 3.23m | 12'7" | x | 10'7" |
| Bedroom 2 | 3.30m | x | 2.96m | 10'9" | x | 9'8" |

Floorplans shown are indicative only. All dimensions indicated are approximate with maximum dimensions of finished measurements and should not be relied upon for carpet sizes or items of furniture. Golding Places reserves the right to make changes to these plans prior to exchange of contracts.

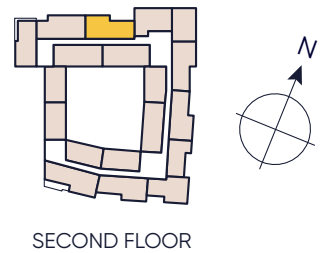


COMPLETE MOVES

— GOLDING —
PLACES

TWO BEDROOM APARTMENT

54 Wrens Cross, Upper Stone Street,
Maidstone, ME15 6YU



Plot 46

Internal area: 74.79m² ~ 805ft²

| | | | | | | |
|---------------|-------|---|-------|--------|---|--------|
| Kitchen | 3.73m | x | 2.01m | 12'2" | x | 6'7" |
| Living/Dining | 6.62m | x | 4.64m | 21'8" | x | 15'2" |
| Bedroom 1 | 3.89m | x | 3.34m | 12'9" | x | 10'11" |
| Bedroom 2 | 3.93m | x | 3.08m | 12'10" | x | 10'1" |

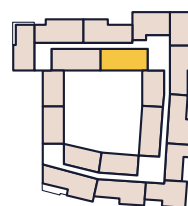
Floorplans shown are indicative only. All dimensions indicated are approximate with maximum dimensions of finished measurements and should not be relied upon for carpet sizes or items of furniture. Golding Places reserves the right to make changes to these plans prior to exchange of contracts.



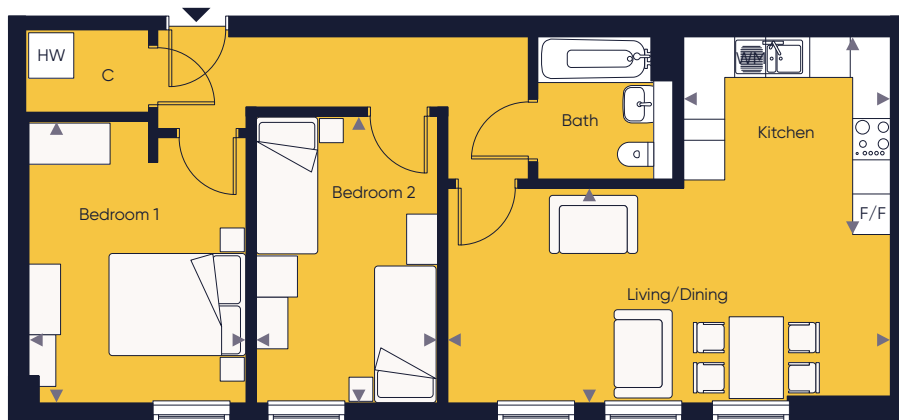
Golding Homes at
Wrens Cross

TWO BEDROOM APARTMENT

47 Wrens Cross, Upper Stone Street,
Maidstone, ME15 6YU



SECOND FLOOR



Plot 47

Internal area: 71.14m² ~ 765ft²

| | | | | | | |
|---------------|-------|---|-------|--------|---|-------|
| Kitchen | 3.03m | x | 2.91m | 9'11" | x | 9'6" |
| Living/Dining | 6.55m | x | 3.16m | 21'6" | x | 10'4" |
| Bedroom 1 | 4.14m | x | 3.18m | 13'6" | x | 10'5" |
| Bedroom 2 | 4.22m | x | 2.60m | 13'10" | x | 8'6" |

Floorplans shown are indicative only. All dimensions indicated are approximate with maximum dimensions of finished measurements and should not be relied upon for carpet sizes or items of furniture. Golding Places reserves the right to make changes to these plans prior to exchange of contracts.

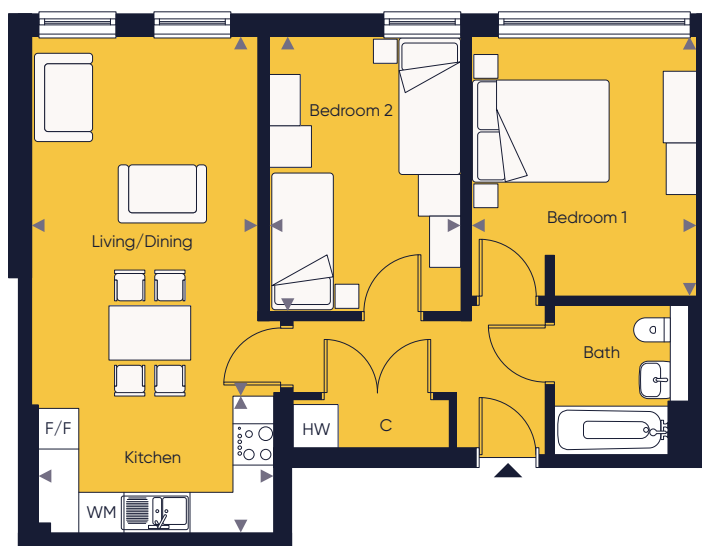
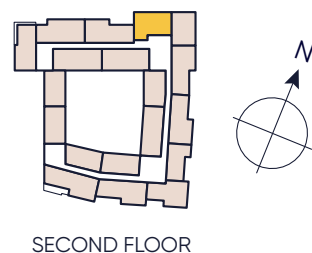


COMPLETE MOVES

— GOLDING —
PLACES

TWO BEDROOM APARTMENT

52 Wrens Cross, Upper Stone Street,
Maidstone, ME15 6YU



Plot 48

Internal area: 66.02m² ~ 710ft²

| | | | | | | |
|---------------|-------|---|-------|-------|---|--------|
| Kitchen | 3.46m | x | 1.94m | 11'4" | x | 6'4" |
| Living/Dining | 5.23m | x | 3.33m | 17'1" | x | 10'11" |
| Bedroom 1 | 4.01m | x | 2.81m | 13'1" | x | 9'2" |
| Bedroom 2 | 3.81m | x | 3.30m | 12'6" | x | 10'9" |

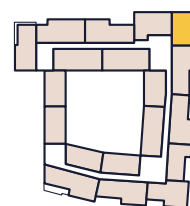
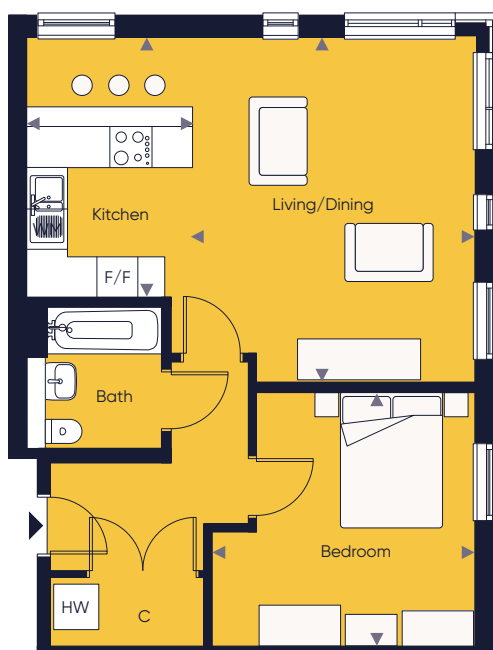
Floorplans shown are indicative only. All dimensions indicated are approximate with maximum dimensions of finished measurements and should not be relied upon for carpet sizes or items of furniture. Golding Places reserves the right to make changes to these plans prior to exchange of contracts.



Golding Homes at
Wrens Cross

ONE BEDROOM APARTMENT

50 Wrens Cross, Upper Stone Street,
Maidstone, ME15 6YU



SECOND FLOOR



Plot 49

Internal area: 59.71m² ~ 642ft²

| | | | | | | |
|---------------|-------|---|-------|-------|---|-------|
| Kitchen | 3.81m | x | 2.44m | 12'6" | x | 8'0" |
| Living/Dining | 5.05m | x | 4.17m | 16'6" | x | 13'8" |
| Bedroom | 3.85m | x | 3.72m | 12'7" | x | 12'2" |

Floorplans shown are indicative only. All dimensions indicated are approximate with maximum dimensions of finished measurements and should not be relied upon for carpet sizes or items of furniture. Golding Places reserves the right to make changes to these plans prior to exchange of contracts.



COMPLETE MOVES

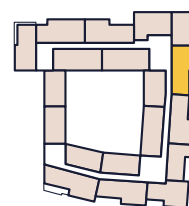
— GOLDING —
PLACES



Golding Homes at
Wrens Cross

TWO BEDROOM APARTMENT

48 Wrens Cross, Upper Stone Street,
Maidstone, ME15 6YU



SECOND FLOOR



Plot 50

Internal area: 74.59m² ~ 802ft²

| | | | | | | |
|---------------|-------|---|-------|-------|---|-------|
| Kitchen | 3.53x | x | 2.15m | 11'6" | x | 7'0" |
| Living/Dining | 6.84m | x | 4.66m | 22'5" | x | 15'3" |
| Bedroom 1 | 3.90m | x | 3.36m | 12'9" | x | 11'0" |
| Bedroom 2 | 3.91m | x | 3.08m | 12'9" | x | 10'1" |

Floorplans shown are indicative only. All dimensions indicated are approximate with maximum dimensions of finished measurements and should not be relied upon for carpet sizes or items of furniture. Golding Places reserves the right to make changes to these plans prior to exchange of contracts.

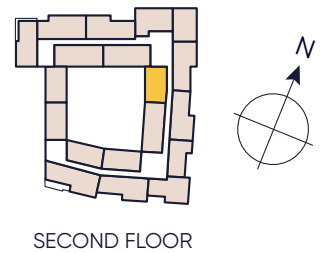
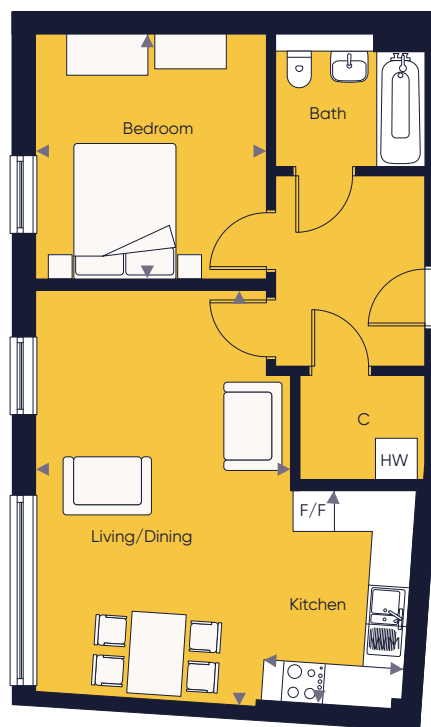


COMPLETE MOVES

— GOLDING —
PLACES

ONE BEDROOM APARTMENT

45 Wrens Cross, Upper Stone Street,
Maidstone, ME15 6YU



Plot 51

Internal area: 57.22m² ~ 615ft²

| | | | | | | |
|---------------|-------|---|-------|-------|---|-------|
| Kitchen | 3.53m | x | 2.06m | 10'4" | x | 6'9" |
| Living/Dining | 6.10m | x | 3.76m | 20'0" | x | 12'4" |
| Bedroom | 3.60m | x | 3.41m | 11'9" | x | 11'2" |

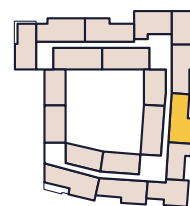
Floorplans shown are indicative only. All dimensions indicated are approximate with maximum dimensions of finished measurements and should not be relied upon for carpet sizes or items of furniture. Golding Places reserves the right to make changes to these plans prior to exchange of contracts.



Golding Homes at
Wrens Cross

TWO BEDROOM APARTMENT

46 Wrens Cross, Upper Stone Street,
Maidstone, ME15 6YU



SECOND FLOOR



Plot 52

Internal area: 73.73m² ~ 793ft²

| | | | | | | |
|---------------|-------|---|-------|-------|---|-------|
| Kitchen | 3.53m | x | 2.25m | 11'6" | x | 7'4" |
| Living/Dining | 6.43m | x | 4.58m | 21'1" | x | 15'0" |
| Bedroom 1 | 3.83m | x | 3.36m | 12'6" | x | 11'0" |
| Bedroom 2 | 3.90m | x | 3.17m | 12'9" | x | 10'4" |

Floorplans shown are indicative only. All dimensions indicated are approximate with maximum dimensions of finished measurements and should not be relied upon for carpet sizes or items of furniture. Golding Places reserves the right to make changes to these plans prior to exchange of contracts.



COMPLETE MOVES

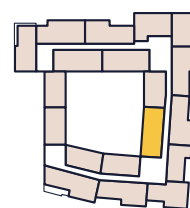
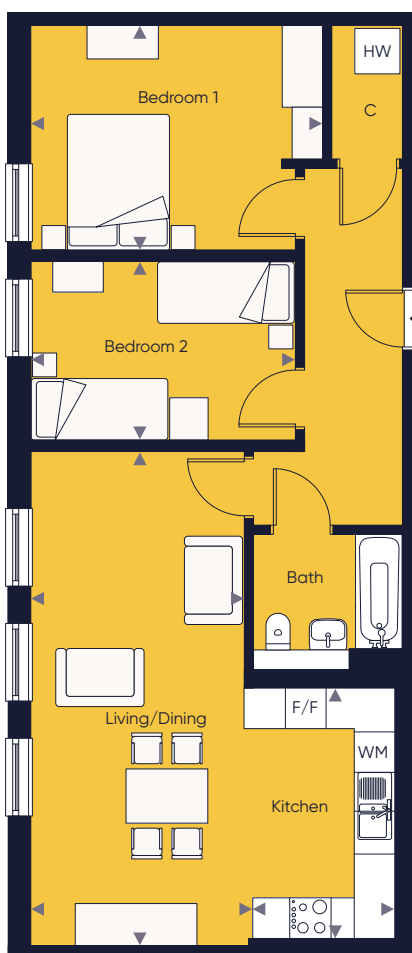
— GOLDING —
PLACES



Golding Homes at
Wrens Cross

TWO BEDROOM APARTMENT

43 Wrens Cross, Upper Stone Street,
Maidstone, ME15 6YU



SECOND FLOOR



Plot 53

Internal area: 75.46m² ~ 812ft²

| | | | | | | |
|---------------|-------|---|-------|-------|---|--------|
| Kitchen | 3.69m | x | 2.09m | 12'1" | x | 6'10" |
| Living/Dining | 7.25m | x | 3.15m | 23'9" | x | 10'4" |
| Bedroom 1 | 4.28m | x | 3.31m | 14'0" | x | 10'10" |
| Bedroom 2 | 3.89m | x | 2.63m | 12'9" | x | 8'7" |

Floorplans shown are indicative only. All dimensions indicated are approximate with maximum dimensions of finished measurements and should not be relied upon for carpet sizes or items of furniture. Golding Places reserves the right to make changes to these plans prior to exchange of contracts.



COMPLETE MOVES

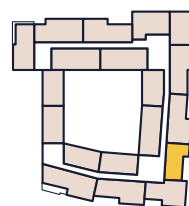
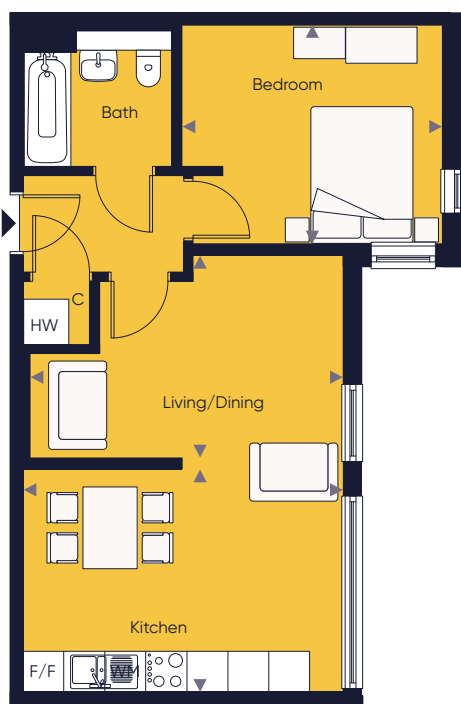
— GOLDING —
PLACES



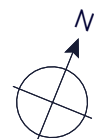
Golding Homes at
Wrens Cross

ONE BEDROOM APARTMENT

44 Wrens Cross, Upper Stone Street,
Maidstone, ME15 6YU



SECOND FLOOR



Plot 54

Internal area: 52.64m² ~ 566ft²

| | | | | | | |
|---------------|-------|---|-------|-------|---|-------|
| Kitchen | 4.68m | x | 3.27m | 15'4" | x | 10'8" |
| Living/Dining | 4.60m | x | 2.98m | 15'1" | x | 9'9" |
| Bedroom | 3.83m | x | 3.21m | 12'6" | x | 10'6" |

Floorplans shown are indicative only. All dimensions indicated are approximate with maximum dimensions of finished measurements and should not be relied upon for carpet sizes or items of furniture. Golding Places reserves the right to make changes to these plans prior to exchange of contracts.

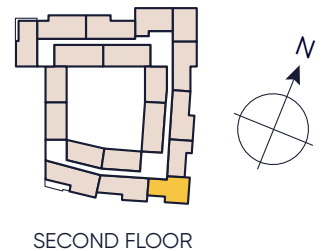


COMPLETE MOVES

— GOLDING —
PLACES

TWO BEDROOM APARTMENT

37 Wrens Cross, Upper Stone Street,
Maidstone, ME15 6YU



Plot 55

Internal area: 70.17m² ~ 755ft²

| | | | | | | |
|---------------|-------|---|-------|--------|---|-------|
| Kitchen | 4.13m | x | 1.95m | 13'6" | x | 6'4" |
| Living/Dining | 5.14m | x | 3.27m | 16'10" | x | 10'8" |
| Bedroom 1 | 3.63m | x | 2.87m | 11'10" | x | 9'4" |
| Bedroom 2 | 3.79m | x | 3.15m | 12'5" | x | 10'4" |

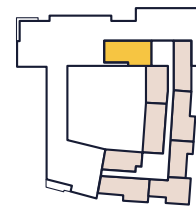
Floorplans shown are indicative only. All dimensions indicated are approximate with maximum dimensions of finished measurements and should not be relied upon for carpet sizes or items of furniture. Golding Places reserves the right to make changes to these plans prior to exchange of contracts.



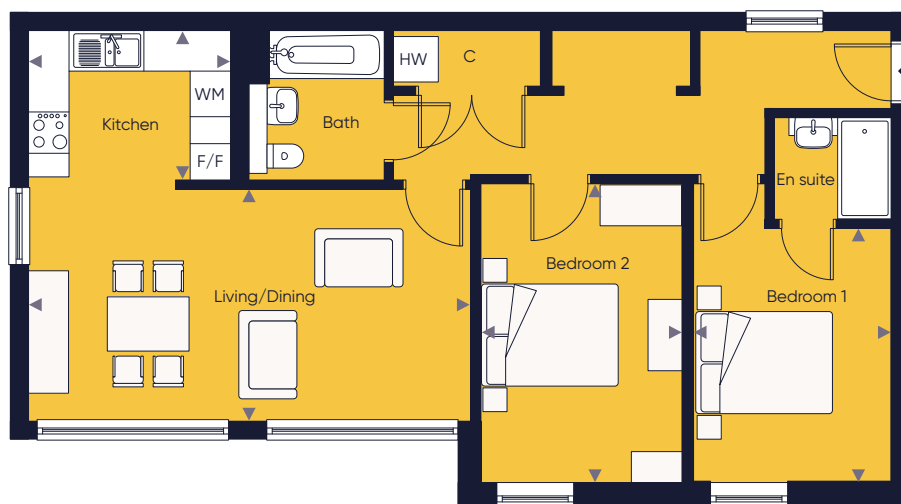
Golding Homes at
Wrens Cross

TWO BEDROOM APARTMENT

63 Wrens Cross, Upper Stone Street,
Maidstone, ME15 6YU



THIRD FLOOR



Plot 56

Internal area: 79.17m² ~ 852ft²

| | | | | | | |
|---------------|-------|---|-------|-------|---|-------|
| Kitchen | 2.97m | x | 2.19m | 9'8" | x | 7'2" |
| Living/Dining | 6.49m | x | 3.41m | 21'3" | x | 11'2" |
| Bedroom 1 | 3.74m | x | 2.95m | 9'8" | x | 12'3" |
| Bedroom 2 | 4.37m | x | 2.92m | 10'4" | x | 9'6" |

Floorplans shown are indicative only. All dimensions indicated are approximate with maximum dimensions of finished measurements and should not be relied upon for carpet sizes or items of furniture. Golding Places reserves the right to make changes to these plans prior to exchange of contracts.



COMPLETE MOVES

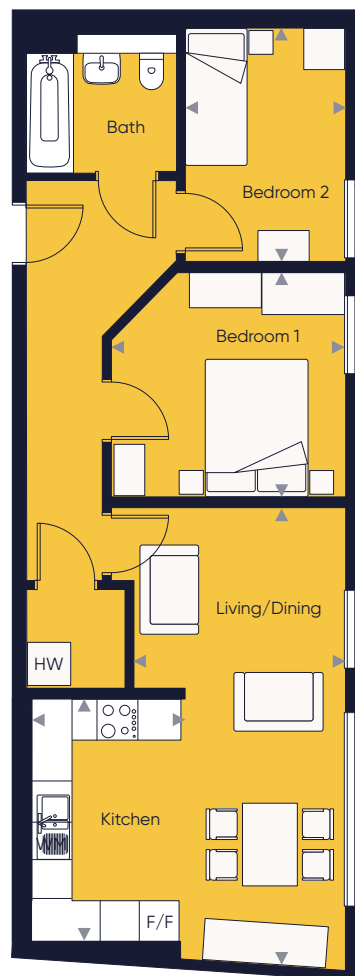
— GOLDING —
PLACES



Golding Homes at
Wrens Cross

TWO BEDROOM APARTMENT

64 Wrens Cross, Upper Stone Street,
Maidstone, ME15 6YU



THIRD FLOOR



Plot 57

Internal area: 64.72m² ~ 696ft²

| | | | | | | |
|---------------|-------|---|-------|--------|---|-------|
| Kitchen | 3.53m | x | 2.24m | 11'7" | x | 7'4" |
| Living/Dining | 6.70m | x | 3.08m | 21'11" | x | 10'1" |
| Bedroom 1 | 3.41m | x | 3.26m | 11'2" | x | 10'8" |
| Bedroom 2 | 3.40m | x | 2.33m | 11'1" | x | 7'7" |

Floorplans shown are indicative only. All dimensions indicated are approximate with maximum dimensions of finished measurements and should not be relied upon for carpet sizes or items of furniture. Golding Places reserves the right to make changes to these plans prior to exchange of contracts.

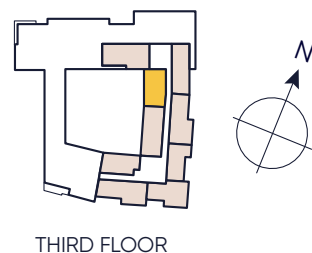
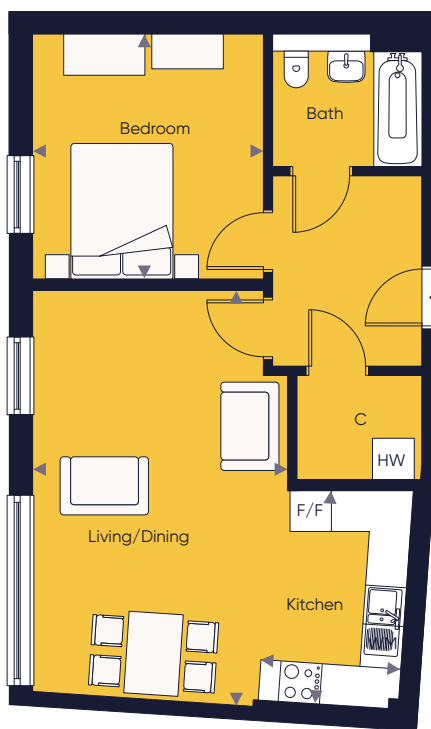


COMPLETE MOVES

— GOLDING —
PLACES

ONE BEDROOM APARTMENT

61 Wrens Cross, Upper Stone Street,
Maidstone, ME15 6YU



Plot 58

Internal area: 57.22m² ~ 615ft²

| | | | | | | |
|---------------|-------|---|-------|-------|---|-------|
| Kitchen | 3.53m | x | 2.06m | 10'4" | x | 6'9" |
| Living/Dining | 6.10m | x | 3.76m | 20'0" | x | 12'4" |
| Bedroom | 3.60m | x | 3.41m | 11'9" | x | 11'2" |

Floorplans shown are indicative only. All dimensions indicated are approximate with maximum dimensions of finished measurements and should not be relied upon for carpet sizes or items of furniture. Golding Places reserves the right to make changes to these plans prior to exchange of contracts.



Golding Homes at
Wrens Cross

TWO BEDROOM APARTMENT

62 Wrens Cross, Upper Stone Street,
Maidstone, ME15 6YU



THIRD FLOOR



Plot 59

Internal area: 73.73m² ~ 793ft²

| | | | | | | |
|---------------|-------|---|-------|-------|---|-------|
| Kitchen | 3.53m | x | 2.25m | 11'6" | x | 7'4" |
| Living/Dining | 6.43m | x | 4.58m | 21'1" | x | 15'0" |
| Bedroom 1 | 3.83m | x | 3.36m | 12'6" | x | 11'0" |
| Bedroom 2 | 3.90m | x | 3.17m | 12'9" | x | 10'4" |

Floorplans shown are indicative only. All dimensions indicated are approximate with maximum dimensions of finished measurements and should not be relied upon for carpet sizes or items of furniture. Golding Places reserves the right to make changes to these plans prior to exchange of contracts.



COMPLETE MOVES

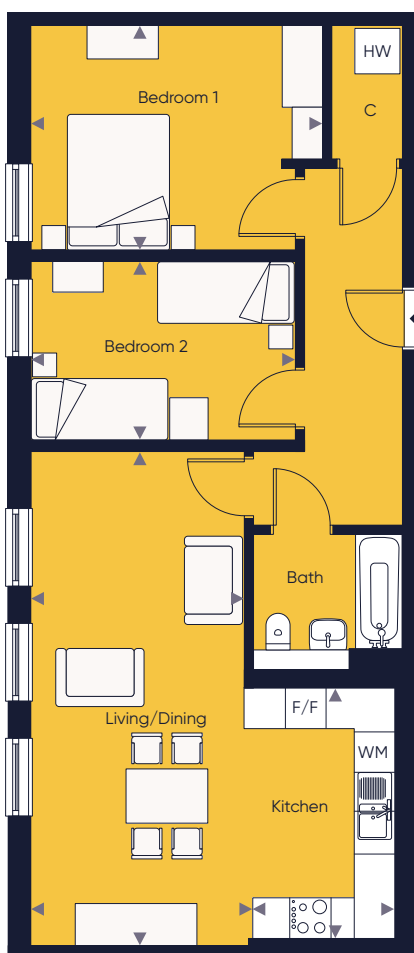
— GOLDING —
PLACES



Golding Homes at
Wrens Cross

TWO BEDROOM APARTMENT

59 Wrens Cross, Upper Stone Street,
Maidstone, ME15 6YU



THIRD FLOOR



Plot 60

Internal area: 75.46m² ~ 812ft²

| | | | | | | |
|---------------|-------|---|-------|-------|---|--------|
| Kitchen | 3.69m | x | 2.09m | 12'1" | x | 6'10" |
| Living/Dining | 7.25m | x | 3.15m | 23'9" | x | 10'4" |
| Bedroom 1 | 4.28m | x | 3.31m | 14'0" | x | 10'10" |
| Bedroom 2 | 3.89m | x | 2.63m | 12'9" | x | 8'7" |

Floorplans shown are indicative only. All dimensions indicated are approximate with maximum dimensions of finished measurements and should not be relied upon for carpet sizes or items of furniture. Golding Places reserves the right to make changes to these plans prior to exchange of contracts.



COMPLETE MOVES

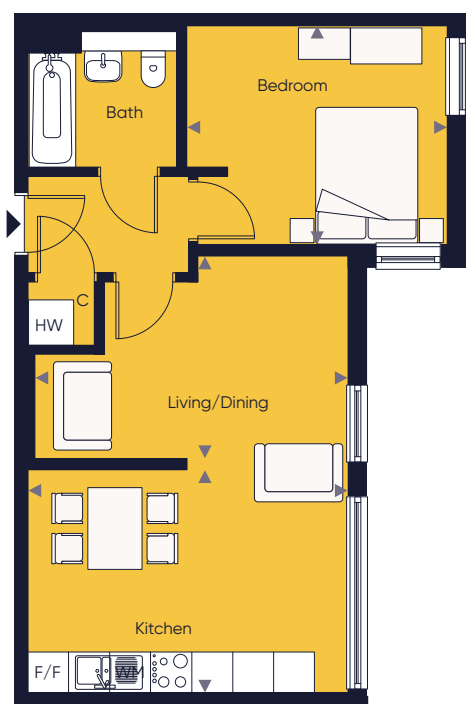
— GOLDING —
PLACES



Golding Homes at
Wrens Cross

ONE BEDROOM APARTMENT

60 Wrens Cross, Upper Stone Street,
Maidstone, ME15 6YU



THIRD FLOOR



Plot 61

Internal area: 52.64m² ~ 566ft²

| | | | | | | |
|---------------|-------|---|-------|-------|---|-------|
| Kitchen | 4.68m | x | 3.27m | 15'4" | x | 10'8" |
| Living/Dining | 4.60m | x | 2.98m | 15'1" | x | 9'9" |
| Bedroom | 3.83m | x | 3.21m | 12'6" | x | 10'6" |

Floorplans shown are indicative only. All dimensions indicated are approximate with maximum dimensions of finished measurements and should not be relied upon for carpet sizes or items of furniture. Golding Places reserves the right to make changes to these plans prior to exchange of contracts.



COMPLETE MOVES

— GOLDING —
PLACES



56 Wrens Cross, Upper Stone Street,
Maidstone, ME15 6YU



Plot 62

Internal area: 70.17m² ~ 755ft²

| | | | | | | |
|---------------|-------|---|-------|-------|---|-------|
| Kitchen | 4.14m | x | 1.98m | 13'6" | x | 6'5" |
| Living/Dining | 4.95m | x | 3.28m | 16'2" | x | 10'9" |
| Bedroom 1 | 3.67m | x | 2.91m | 12'0" | x | 9'6" |
| Bedroom 2 | 3.82m | x | 3.16m | 12'6" | x | 10'4" |

Floorplans shown are indicative only. All dimensions indicated are approximate with maximum dimensions of finished measurements and should not be relied upon for carpet sizes or items of furniture. Golding Places reserves the right to make changes to these plans prior to exchange of contracts.



COMPLETE MOVES

— GOLDING —
PLACES



Golding Homes at
Wrens Cross

TWO BEDROOM APARTMENT

57 Wrens Cross, Upper Stone Street,
Maidstone, ME15 6YU



THIRD FLOOR



Plot 63

Internal area: 73.37m² ~ 789ft²

| | | | | | | |
|---------------|-------|---|-------|-------|---|--------|
| Kitchen | 3.16m | x | 2.06m | 10'4" | x | 6'9" |
| Living/Dining | 6.82m | x | 4.65m | 22'4" | x | 15'3" |
| Bedroom 1 | 3.89m | x | 3.31m | 11'1" | x | 10'10" |
| Bedroom 2 | 3.91m | x | 3.02m | 12'9" | x | 9'10" |

Floorplans shown are indicative only. All dimensions indicated are approximate with maximum dimensions of finished measurements and should not be relied upon for carpet sizes or items of furniture. Golding Places reserves the right to make changes to these plans prior to exchange of contracts.



COMPLETE MOVES

— GOLDING —
PLACES

TWO BEDROOM APARTMENT

58 Wrens Cross, Upper Stone Street,
Maidstone, ME15 6YU



Plot 64

Internal area: 71.04m² ~ 764ft²

| | | | | | | |
|---------------|-------|---|-------|-------|---|--------|
| Kitchen | 5.38m | x | 1.99m | 17'7" | x | 6'6" |
| Living/Dining | 4.72m | x | 3.35m | 15'5" | x | 10'11" |
| Bedroom 1 | 3.57m | x | 3.50m | 11'8" | x | 11'5" |
| Bedroom 2 | 4.08m | x | 3.09m | 13'4" | x | 10'1" |

Floorplans shown are indicative only. All dimensions indicated are approximate with maximum dimensions of finished measurements and should not be relied upon for carpet sizes or items of furniture. Golding Places reserves the right to make changes to these plans prior to exchange of contracts.